

GPS Solutions FOR CREDIT UNIONS

*"In my 20 years of GPS purchasing,
there has been no better company
or product than PassTime!"*

-Mike Brill | HELM Financial

WHYPASSTIME



Solution Suite

A Customized Approach to GPS

Let our team of solution experts guide you to one of our award winning products that meets your organizations specific needs.



Proven Results

Improved Portfolio Performance

PassTime GPS can improve portfolio performance by reducing delinquencies, reducing days to recover, and lowering repo costs.



Industry Leaders

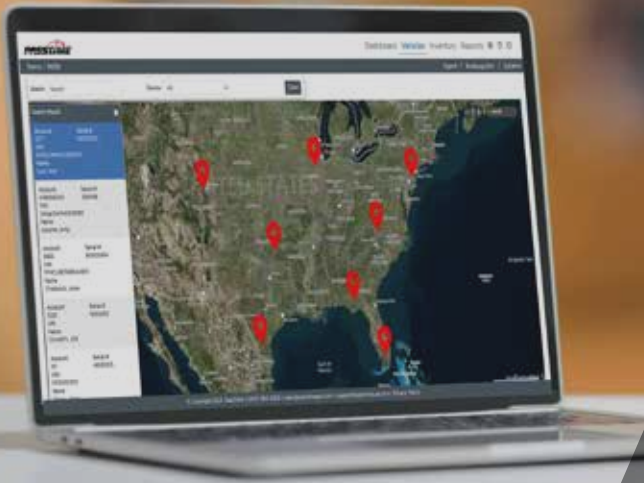
Leading Product Quality and Service

For more than 25 years, PassTime has been a leader in the industry. Product innovation and unrivaled 24/7 customer service sets PassTime apart!

MORE ABOUT PASSTIME

Headquartered a few miles south of Denver, in Littleton, Colorado, PassTime is a leading provider of award-winning GPS Solutions. For more than 25 years, we've served the automotive finance industry with cutting-edge technology. We have some of the longest tenured employees in the industry, developing industry experts that understand the needs of our customers. We have dozens of technology patents, and a worldwide customer base of over 10,000 businesses.

For more information on how PassTime can assist credit unions, email consult@myleverage.com or call 855-9EXPERT (855-939-7378).



GPS Solutions FOR CREDIT UNIONS

"Real Time GPS vehicle location data has allowed us to catch potential fraud earlier on and address the matter more efficiently"

-Roy Lopez | Automotive Credit Corporation

OUR SOLUTIONS

Encore
Battery-Powered
GPS

TRAX
Reliable & Affordable
GPS Solution

SELECT
Feature-Rich GPS
Solution

ELITE
GPS with Fully Automated
Collection Technology

THE BENEFITS

92%

Report Delinquency Reduction

- 92% of Lenders report reduction in delinquency using GPS technology
- Starter Interrupt and ACT deliver more on-time payments

24%

24% Recovery Improvement

- Lenders up to 98% recovery rate with GPS
- Lenders without GPS report 60-72% recovery rate.

44%

Reduced ADTR by 44%

- Lenders report reduction in Average Days to Repo (ADTR)
- 1.5-2 ADTR with GPS
- 8-15 ADTR without GPS

21%

Increased Recovery Value by 21%

- Reduction in depreciation
- Less vehicle wear and tear
- Lower unpaid balance
- Reduction in charge-offs

PARTNERS & INTEGRATIONS



DMS and LMS
Systems



Payment Processors
& Texting Solutions



Industry Leading
Associations



The Compliance
Watchdogs

FAQs - PASSTIME GPS

Q: What are the benefits of a PassTime GPS device to the Credit Union?

A: PassTime devices help reduce the credit union's risk of financing. Fewer defaults require fewer repossessions, which improves cash flow and allows the credit union the ability to fund more loans.

Q: What are the benefits of a PassTime GPS device to the Member?

A: With a member agreeing to the use of the device, the Credit Union may feel comfortable providing the member financing for a higher loan amount, a lower interest rate or a lower down payment all which could benefit the member. Additionally, if the member's vehicle is stolen, the GPS may be helpful to law enforcement for recovery.

Q: Who installs the GPS Device?

A: Installation can typically be performed by a mechanic or an electronics installer. PassTime also has installation programs in certain areas.

Q: Can the cost of the GPS Device be passed onto the Member?

A: The GPS device should be considered an operating cost and should not be passed on. In fact, doing so could be unlawful in some states.

Q: Does the Member need to know there is a GPS installed on their vehicle?

A: Yes, the device and how it works must be disclosed to the member. PassTime has state-specific, written disclosure forms available for all customers to use.

Q: Can the GPS Device Shut Down a Vehicle?

A: Some GPS devices include a feature called "starter-interrupt" or "vehicle disable" which can disable or interrupt the starter of the vehicle. A properly installed device cannot disable a vehicle while it is running. Ask about the available features on your device.

Q: Which wireless network does the GPS Device use?

A: PassTime works with top-tier wireless carriers to provide service to its GPS solutions. In the United States, most PassTime devices operate on Verizon or AT&T.